



## Phase One – 10 Question Quiz

1) How many of Whites pieces are attacking the Black Knight on d5? \_\_\_\_\_

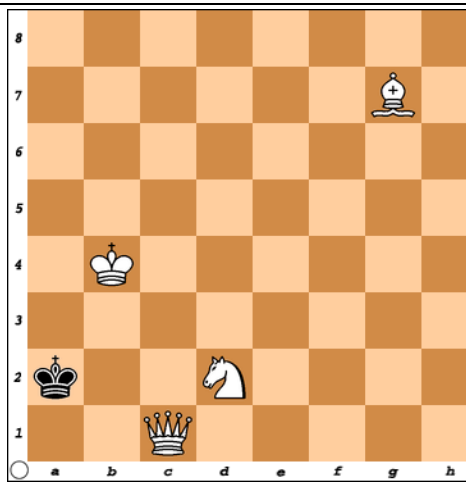
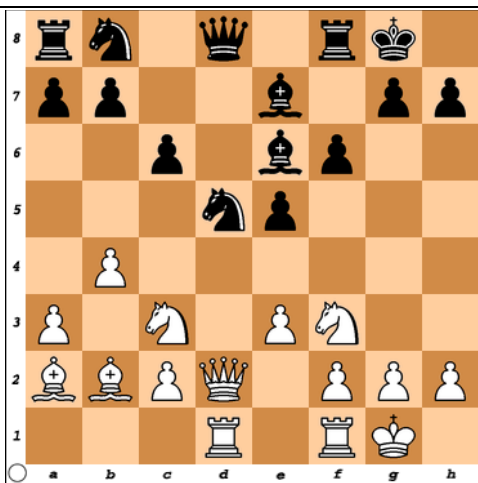
2) How many of Blacks pieces and pawns are defending the Black Knight? \_\_\_\_\_

3) Would it be profitable for White to capture the Black Knight? \_\_\_\_\_

4) How many different ways can White possibly checkmate Black? \_\_\_\_\_

5) Write each answer below using chess notation.

Whites move

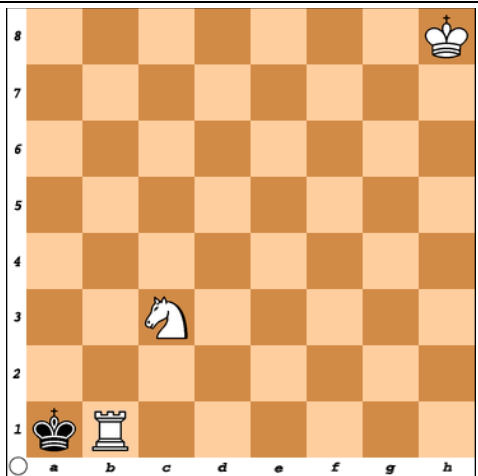


Mating Patterns. Name the mate

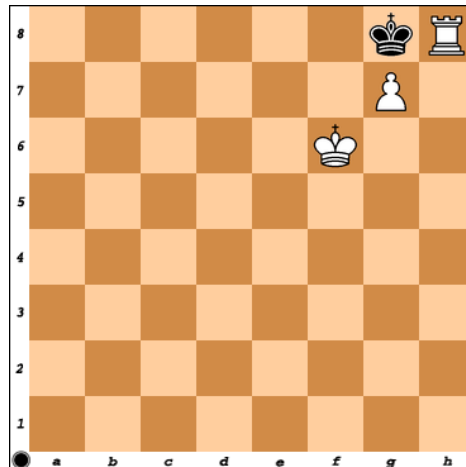
6) \_\_\_\_\_

7) \_\_\_\_\_

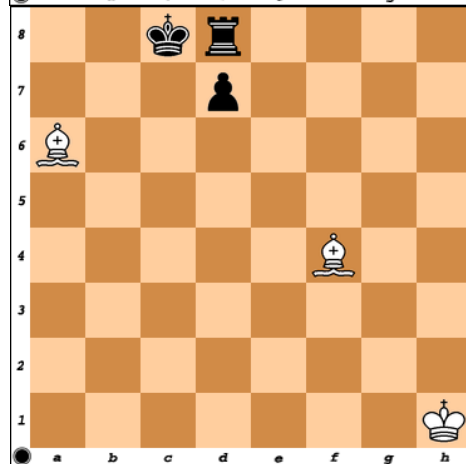
8) \_\_\_\_\_



6)



7)



8)



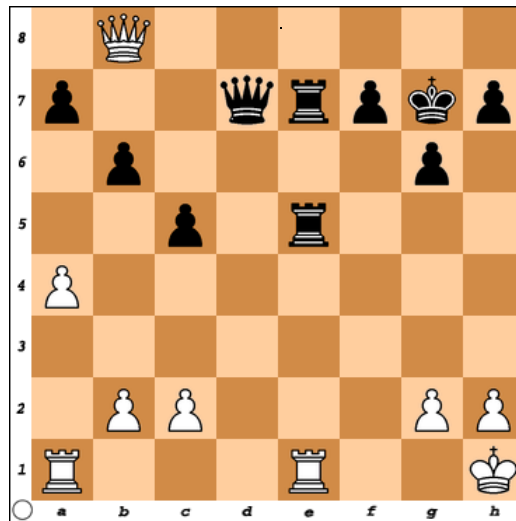
## Phase One – 10 Question Quiz

9) Find the twofold attack

\_\_\_\_\_

Profit= \_\_\_\_\_

Whites move



10) Blacks move; Circle: A, B, C, or D

- A) Check
- B) Checkmate
- C) Stalemate
- D) None of the Above

